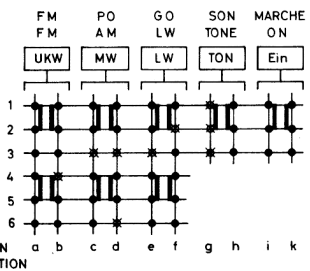


Kennloch IDENTIFICATI TROU-REPEL



Schaltichtung SWITCHING DIRECTION SENS DE COMMUTATION

Wellenbereiche: WAVE BANDS: GAMMES D'ONDES

MW	- AM - PO	510	1620	kHz / kc
LW	- GO	145	260	kHz / kc
UKW	- FM - FM	87	108	MHz / Mc
AM - ZF		460	kHz / kc		
FM - ZF		10,7	MHz / kc		

AM - Spulensatz AM - COIL-SET BLOC - BOBINAGE - AM

Ferritstabantenne kpl. FERRITE ROD BATONNET - FERRITE COMPL. 7701-374

HF-NF-Platte RF-AF-BOARD PLAQUE HF-BF 7305-158

Spannungen mit Gr auf den Meßbereich Batteriespannung / Spennungs- und Str eingedrehtem Dreh VOLTAGES MEASUR THE RANGES 10/3/ VOLTAGE OF 75V: VOLTAGE AN CURRI AT RECESSED VARI/ WITHOUT SIGNAL

Änderungen vorbehalten

ALTERATIONS RESERVED

MODIFICATIONS RÉSERVÉES

gedruckter Kond PRINTED CAPAC CONDENSATEUR

ZF1: 7214-218 c. 1.

ZFII: 7215-405 c. 1. 2. 3.

ZFIII: 72

C:	15, 25, 11,	12, 20, 13, 14, 16, 17,	18,	19,	21, 22,	23,	24,	26, 27, 28, 29, 31,	34, 36,	32,	37, 38, 39, 41, 42, 43,	44, 33, 46,	
R:	11,	12,	13,	14,	16,	17,	21,	18, 19,	22,	23,	24,	26, 27,	28, 29, 31,